

---

## First Generation

---

1. **Gladys Ruby STRIPLING**, daughter of John William STRIPLING (1861-1925) and Jane Margaret HOPKINS (1863-1937), was born on 7 August 1901 in Bethnal Green, London.<sup>1</sup> She appeared in the census on 2 April 1911 in Bethnal Green.<sup>1</sup> She married Albert Edward DIVER on 14 August 1926 in Shoreditch. She died in April 1985. She was buried in St Mary's, Old Ewell.



Gladys Ruby STRIPLING, 1974, age 73

Attended a Montessori school in Bethnal Green. Visible in 1911 census. Was North London secondary diving champion like her father. Won a cup; he later 'reclaimed' her cup and had the engravings removed so he could donate it for a golfing prize! Attended evening classes around 1917; met Burt there and played piano accompaniment for his singing. Became PA to Sir Herbert Paterson of Carter Paterson who had the contract to run the Wembley Exhibition of 1924-5. Arranged travel and practicalities for exhibitors. Capable shorthand typist, achieved speed required to work for Hansard if she wanted. Lived in Norwich after marriage (Burt sales rep for Rowntrees); then Westgate-on-Sea, Thanet; were about to move in 1940 and so put furniture in store; June and Dawn evacuated on 28 May 1940; house bombed on 29 May 1940.

'Glad'.

Albert Edward DIVER, son of Charles DIVER (1866-1954) and Mary Ann BROWN (1868-1948), was born on 27 January 1901 in Shoreditch, London.<sup>2,3</sup> He was an Airforce in WWII. Salesman for Rowntrees. He appeared in the census on 31 March 1901 in St Leonard's, Shoreditch, London.<sup>2</sup> He appeared in the census on 2 April 1911 in Dalston, London.<sup>3</sup> On 2 April 1911 he was a school in Dalston.<sup>3</sup> He died on 24 March 1969. He was buried in St Mary's. He and Gladys Ruby STRIPLING had the following children:



Spouse: Albert Edward DIVER, 1954, age 53

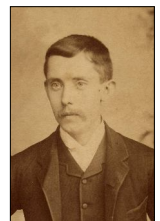
June Sylvia DIVER  
Dawn Angela DIVER

---

## Second Generation

---

2. **John William STRIPLING**, son of Benjamin STRIPLING and Mary Ann LAY, was born on 2 January 1861 in 35 Well St, Mile End, Middlesex. He was a Scholar (1871), Goldbeater (1881, 1883), cabinet maker (1888, 1901), fancy whatnot maker (1911). He married Jane Margaret HOPKINS on 1 January 1882 in St Thomas, Bethnal Green. He appeared in the census on 31 March 1901 in Bethnal Green.<sup>4</sup> On 31 March 1901 he was a Fancy what-not maker in Bethnal Green.<sup>4</sup> He appeared in the census on 2 April 1911 in Bethnal Green.<sup>1</sup> On 2 April 1911 he was a Fancy what-not & folding chair in Bethnal Green.<sup>1</sup> He died on 8 March 1925 in St Bartholomew's Hospital. He was buried on 13 March 1925 in Abney Park, London cemetery.



John William STRIPLING, 1895?, age 34

Known as Jack. Beat the gold for the top of the Monument. North London secondary diving champion. 34 Thomas St, Bethnal Green, 1881, 1882. 16 Sidney St, Bethnal Green, 1883. 58 Ravenscroft St, Bethnal Green 1888. 75 St Peter St, Bethnal Green 1892. 79 Columbia Rd, Bethnal Green by 1901, 1911. Shown as In Wm in 1891 census. Owned all the houses "from the pub on the corner on the odd-numbered side of Columbia Rd", and owned a furniture factory. Many of these properties destroyed by German fire bombing. Made the oak dining table as a wedding present for Glad and Bert; now in Kohekohe Rd. Regularly turned out on 1 Jan to feed poor in St Martins in the Fields crypt.

3. **Jane Margaret HOPKINS**, daughter of Richard Thomas HOPKINS and Mary Ann Hester CLAISSE, was born on 21 November 1863 in 10 Granby Row, Bethnal Green. She was a Scholar (1871); Cigar maker (1881), helping in the business (1911). She appeared in the census in 1881 in Bethnal Green. She appeared in the census on 31 March 1901 in Bethnal Green.<sup>4</sup> She appeared in the census on 2 April 1911 in Bethnal Green.<sup>1</sup> On 2 April 1911 she was an assisting in the business (1911) in Bethnal Green.<sup>1</sup> She died on 9 January 1937 in 14 Queen's Road, Bethnal Green. She was buried on 18 January 1937 in Abney Park, London Cemetery.



Jane Margaret  
HOPKINS

Vis in 1871 census 7 Granby Row, 1881, 1882. Living in 79 Columbia Rd, Bethnal Green in 1930s.

Stripling, Jane Margaret 18jan1937 73y 161543 H02 8S01.

John William STRIPLING and Jane Margaret HOPKINS had the following children:

Hester Mary Ann STRIPLING (1883-1888). *Hester was born on 29 March 1883 in Bethnal Green. She died on 12 July 1888 in Bethnal Green.*

William John STRIPLING (1884-1965). *William was born on 22 July 1884 in Bethnal Green. He was a Cabinet Maker (1903), Insurance agent and Insurance Agent (1914-); He appeared in the census on 31 March 1901 in Bethnal Green.<sup>4</sup> On 31 March 1901 he was a Fancy what-not maker in Bethnal Green.<sup>4</sup> He married Sarah Ann JOHNSON on 25 December 1903 in St Leonard's Shoreditch. He married Dorothy Elizabeth FRENCH on 4 February 1926 in St Leonard's Shoreditch. He died in 1965 in Alton, Hampshire.*

Anthony Benjamin STRIPLING (1892-1980). *Anthony was born on 4 January 1892 in 75 St Peters St, Bethnal Green. He was a Toolmaker, mechanical engineer; cycle maker (1911). He appeared in the census on 31 March 1901 in Bethnal Green.<sup>4</sup> He appeared in the census on 2 April 1911 in Bethnal Green.<sup>1</sup> On 2 April 1911 he was a cycle erector in Bethnal Green.<sup>1</sup> He married Jessie VANDERBERG on 5 December 1915 in Registry Office, Bethnal Green. He died on 11 August 1980 in Brook Hospital, Greenwich.*

- 1 Gladys Ruby STRIPLING (1901-1985)

---

## Third Generation

---

4. **Benjamin STRIPLING**, son of Benjamin STRIPLING and Sophia, was born in 1827 in Hammersmith.<sup>5</sup> He was a Labourer (1841), Waterman (1847), Labourer (1851, 1861, 1882). He appeared in the census on 6 June 1841 in Tower Hamlets.<sup>6</sup> On 6 June 1841 he was a Labourer in Tower Hamlets.<sup>6</sup> He married Mary Ann LAY on 15 June 1847 in St John the Baptist, Shoreditch. He appeared in the census on 30 March 1851 in St Dunstan, Stepney.<sup>5</sup> On 30 March 1851 he was a Labourer in St Dunstan.<sup>5</sup> He died in 1861 in Mile End.

George St (1847) 12 Well St? Benjn Striplin in St Leonard, Shoreditch in 1841; living in Waterman's Row with parents Benjamin and Sophia. Parish of St Dunstan, Stepney (Tower Hamlets), 1851 and 1861 census. Marriage cert shows Father = Benjamin Stripling. Not Anthony... M04037-1 System Origin: England-ODM Source Film Number: 590846 Reg of death in Jun 1861 in Mile End (but could be for father?). IGI gives 08 May 1861 burial place: Hackney, Middlesex record set: RG8\_0045 (non-conformist).

5. **Mary Ann LAY**, daughter of John LAY and Maria Susan, was born in 1826 in Bethnal Green. She was a Silk winder (manufacturing), 1851, '61, '71, '81, '91 census. She appeared in the census on 30 March 1851 in St Dunstan.<sup>5</sup> On 30 March 1851 she was a Silk winder in St Dunstan.<sup>5</sup> She died in 1892 in Bethnal Green.

Five Mary Lay b in Middlesex in 1826-1828 in 1841 census. Servant in Stepney & Whitechapel, 1841 census; or with Irish parents? Head of family (widow) in 1871 and 1881. Chapel St (1847) Preston St, Tower Hamlets (1871). All six 'children' at home in 1881: 34 Thomas St, Bethnal Green. Bap not recorded in Bethnal Green but claimed in census forms.

Benjamin STRIPLING and Mary Ann LAY had the following children:

- Mary Ann STRIPLING (1847-1848). *Mary was born on 2 October 1847. She died on 3 January 1848.*
- Joseph Henry STRIPLING (1849- ). *Joseph was born on 7 November 1849 in Spitalfields, Middlesex. He was an Errand Boy (1861), Carman (1871 and 1881 censuses). He appeared in the census on 30 March 1851 in St Dunstan.*<sup>5</sup>
- Henry STRIPLING (1852- ). *Henry was born on 10 April 1852 in Mile End, Middlesex. He was an Unemployed labourer (1871 census), Traveller (1881 census).*
- Thomas James STRIPLING (1853- ). *Thomas was born on 11 March 1853 in Mile End. He was a Scholar (1871 census), Purse maker (leather), 1881 census.*
- Benjamin STRIPLING (1854-1893). *Benjamin was born on 1 November 1854 in Mile End. He was an Errand boy (1871 census), Labourer (1881 census). He died in March 1893 in Bethnal Green.*
- Sarah Jane STRIPLING (1858- ). *Sarah was born on 7 September 1858 in Mile End. She was a Scholar (1871 census), Boot sewer (binder), 1881 census.*
- 2 John William STRIPLING (1861-1925)

6. **Richard Thomas HOPKINS**, son of Richard Thomas HOPKINS and Mary BAKER, was born on 21 July 1824 in Bethnal Green. He was baptised on 8 August 1824 in St Matthew, Bethnal Green. He was a Silk Weaver, journeyman (1851). He appeared in the census on 6 June 1841 in Tower Hamlets.<sup>7</sup> He married Mary Ann Hester CLAISSE on 31 August 1845 in St Leonard's Shoreditch. They appeared in the census in 1881 in Bethnal Green. He died in December 1891 in Bethnal Green.

Shown as Thomas in 1841 19 New Dysson St (?), 1851; 6 Granby Row (1861), 7 Granby Row (1881, 1882), Bethnal Green Bap on IGI, batch C04698-1 System Origin: England-ODM Source Film Number: 855941 "Built terraced houses for his workers in Bethnal Green and Spitalfields" according to letter from June to Gemma, 1996.

7. **Mary Ann Hester CLAISSE**, daughter of Thomas Boniface CLAISSE and Jane FIELD, was born on 6 February 1827 in Bethnal Green. She was baptised on 18 March 1827 in St Matthew. She was a Silk weaver (1851) Silk weaveress (1881). She died in June 1895 in Bethnal Green.

Lived in Bethnal Green We have a small piece of woven silk. Batch C04698-1 System Origin: England-ODM Source Film Number: 855941.

Photo by Waltenberg, Theodore: Born 1856, Russia. Died 1933.

STUDIO: 339 Bethnal Green Road, Bethnal Green. 1886 - 1890; moved thereafter (this is address on back of photo).



Mary Ann  
Hester  
CLAISSE,  
1886?, age 59

Richard Thomas HOPKINS and Mary Ann Hester CLAISSE had the following children:

- Richard HOPKINS (1848-1905?). *Richard was born on 20 January 1848 in Bethnal Green. He was baptised on 13 February 1848 in St Matthew. He was a Carpenter's Boy (1861); upholsterer (1881). He married Sarah Sophia MCDONALD in 1869 in Hackney. He died in 1905 (approx.).*
- Thomas HOPKINS (1850- ). *Thomas was born in April 1850 in Bethnal Green. He was a Slipper maker (1871).*
- Emma HOPKINS (1854-1918). *Emma was born in 1854 in Bethnal Green. She was a Fur sewer (1871), Furrier (1881). She married James William MACDONALD in 1876 in Hackney. She died in 1918 in Bethnal Green.*
- Clara HOPKINS (1860-1932). *Clara was born on 6 May 1860 in Bethnal Green. She was a Scholar (1871). She married Henry SHEPHERD on 27 July 1879 in Bethnal Green. She died on 26 December 1932 in Watford.*
- 3 Jane Margaret HOPKINS (1863-1937)

---

## Fourth Generation

---

8. **Benjamin STRIPLING**, son of Anthony STRIPLING and Elizabeth BUTLER, was born on 5 March 1796 in Stepney. He was baptised on 15 May 1796 in Spitalfields, Christ Church, Stepney. He was a Ship's Steward; Master (1841). He married Sophia in 1825 (approx.). He appeared in the census on 6 June 1841 in Tower Hamlets.<sup>6</sup> On 6 June 1841 he was a Master in Tower Hamlets.<sup>6</sup> He appeared in the census on 30 March 1851 in St George in the East, Tower Hamlets.<sup>8</sup> On 30 March 1851 he was a Labourer in St George in the East.<sup>8</sup> He died in 1856 (approx.).

Info from Carolyn Jeeves (ex-Bathgate and Axford Ancestors), putting Anthony's first child as Benjamin and therefore old enough to be the father of Benjamin b 1826/7. A Benjamin Stripling d Jun 1861 in Mile End: this one or his son? 08 May 1861

burial place: Hackney, Middlesex

record set: RG8\_0045

NB Striplin in 1841 census in Shoreditch.

Recorded as unmarried in 1851 census; presumably widowed?

9. **Sophia** was born in 1805 (approx.) in Not London. She was a Laundress (1841). She appeared in the census on 6 June 1841 in Tower Hamlets.<sup>6</sup> On 6 June 1841 she was a Laundress in Tower Hamlets.<sup>6</sup> She died in 1846 (approx.).

Hard to read on 1841 census (see image) but transcribed as Sophia.

Benjamin STRIPLING and Sophia had the following children:

- 4 Benjamin STRIPLING (1827-1861)  
 Louisa STRIPLING (1827?-1855). *Louisa was born in 1827 (approx.) in Spitalfields, Middlesex. She was a Tailoress (1851). She married Thomas William John CORRIGAN on 25 December 1847 in Spitalfields, London. She died on 26 December 1855 in London.*  
 Elizabeth STRIPLING (1828?- ). *Elizabeth was born in 1828 (approx.).*

10. **John LAY** was born in 1800 (approx.) in Ireland? He was a Scale maker. He married Maria Susan in 1825 (approx.). He died in 1846 (approx.).

There is a John Lay, Tailor, b Ireland 1801, living in Claremont Place, Marylebone, with wife Mary b Ireland 1806 and children John b 1826, Mary b 1828 in Middlesex, Margaret b 1831, Ann b 1834, Ellen b 1834 and Jane b 1841 (2 mo old) (all b London). No other links in London?

11. **Maria Susan** was born in 1806 (approx.) in Ireland?

Guessing this is mother; witnessed Mary-Ann's wedding cert. Not visible in 1841 or 1851 census in Bethnal Green.

John LAY and Maria Susan had the following children:

- 5 Mary Ann LAY (1826-1892)

12. **Richard Thomas HOPKINS**, son of Richard HOPKINS and Mary, was born on 7 May 1802 in Bethnal Green. He was baptised on 22 August 1802 in St Matthew, Bethnal Green. He was a Silk weaver. He married Mary BAKER on 29 February 1824 in St Dunstan's Stepney. He appeared in the census on 6 June 1841 in Tower Hamlets.<sup>7</sup> On 6 June 1841 he was a Silk weaver in Tower Hamlets.<sup>7</sup> He died in 1855 (approx.).

in 1841 and 1851 census with whole family; map shows Leicester Square but data says Bethnal Green. 28 Coventry St, Bethnal Green (1851 census) NB in 1851 census, looks like b 1802/3; matches baptism. Batch C04698-3 System Origin: England-ODM Source Film Number: 855940 ; names parents.

Mother remembers "Uncle Harry Hopkins who lived in Southend". Lots of possible death records on FreeBMD.

13. **Mary BAKER**, daughter of Joseph BAKER and Ann POTTER, was born in 1809 in Bethnal Green. She was

baptised on 10 December 1809 in St Mary Whitechapel, Stepney. She was a Silk weaver. She appeared in the census on 6 June 1841 in Tower Hamlets.<sup>7</sup> On 6 June 1841 she was a Silk weaver in Tower Hamlets.<sup>7</sup> She died in 1855 (approx.).

in 1841 & 1851 census Bap not visible on FreeReg, but likely one on IGI batch C02557-5 System Origin: England-ODM Source Film Number: 94695.

Mary Hopkins d 1851 Bethnal Green; another d Bethnal Green 1858.

Richard Thomas HOPKINS and Mary BAKER had the following children:

- 6 Richard Thomas HOPKINS (1824-1891)  
 Thomas HOPKINS (1825- ). *Thomas was born on 3 September 1825 in Bethnal Green, London.*  
 Mary HOPKINS (1831- ). *Mary was born in 1831 in Bethnal Green. She was a Silk weaver (1851),  
 laundress (1861). She appeared in the census on 6 June 1841 in Tower Hamlets.*<sup>7</sup>  
 Ann HOPKINS (1833- ). *Ann was born in 1833 in Bethnal Green. She was a Silk weaver. She  
 appeared in the census on 6 June 1841 in Tower Hamlets.*<sup>7</sup>  
 Esther Elizabeth HOPKINS (1832- ). *Esther was born on 10 August 1832 in Bethnal Green. She  
 appeared in the census on 6 June 1841 in Tower Hamlets.*<sup>7</sup>  
 Sarah HOPKINS (1835- ). *Sarah was born in 1835 in Bethnal Green. She was a Servant (1851  
 census). She appeared in the census on 6 June 1841 in Tower Hamlets.*<sup>7</sup>  
 James HOPKINS (1836- ). *James was born on 17 April 1836 in Bethnal Green. He was a Polisher  
 (1851); upholsterer (1861). He appeared in the census on 6 June 1841 in Tower Hamlets.*<sup>7</sup>  
 John HOPKINS (1838- ). *John was born in 1838 in Bethnal Green. He was a Cabinet maker (1861  
 census). He appeared in the census on 6 June 1841 in Tower Hamlets.*<sup>7</sup>  
 Jane HOPKINS (1840-1841?). *Jane was born in 1840 in Bethnal Green. She appeared in the census  
 in 1841. She died in 1841 (approx.) in Bethnal Green.*  
 Jane HOPKINS (1844- ). *Jane was born in 1844 in Bethnal Green. She was a Scholar (1851), wool  
 knitter (1861).*

14. **Thomas Boniface CLAISSE**, son of Jacques CLAISSE and Marie Anne COCKSHUTT, was born on 15 May 1802 in Norton Folgate, London. He was baptised on 13 June 1802 in French Huguenot Ch, Threadneedle St. He was a Weaver, clerk. He married Jane FIELD on 23 June 1822 in St Mary's Whitechapel. He appeared in the census on 6 June 1841 in Tower Hamlets.<sup>9</sup> On 6 June 1841 he was a ... Weaver in Tower Hamlets.<sup>9</sup> He died on 23 April 1854 in Bethnal Green.

French Huguenot, family from Bethencourt. 'Widowed' at marriage, and married Ann Field?? Transcription errors?  
 Bap RG4-4634 M00066-5 System Origin: England-EASy Source Film Number: 94702 Visible in 1841 and 1851  
 census. Died at 18 James St, Bethnal Green

NB Ken Claisse is now a phtogrpher "Photo Friends" recording life in Bethnal Green. Photo on file and sound  
 recording recalling tube station bombing.

[http://www.bbc.co.uk/london/content/articles/2007/08/14/towerhamlets\\_memoryshare\\_video\\_feature.shtml](http://www.bbc.co.uk/london/content/articles/2007/08/14/towerhamlets_memoryshare_video_feature.shtml).

15. **Jane FIELD**, daughter of Thomas FIELD and Mary BARBATO, was born on 3 March 1800 in Bethnal Green. She was baptised on 30 March 1800 in St Matthew. She was a Silk weaver (1861). She appeared in the census on 6 June 1841 in Tower Hamlets.<sup>9</sup> On 6 June 1841 she was a ... Weaver in Tower Hamlets.<sup>9</sup> She died on 1 August 1861 in 15 James St, Bethnal Green.

Widow, living with son in 1861 census; visible in 1841 and 1851 census and age puts her as b 1800-01 each time.  
 Marriage not on FreeReg. C04698-3 System Origin: England-ODM Source Film Number: 855940 Alternate Jane, b  
 1800, daughter of John Field and Mary?? Baptism C04080-2 System Origin: England-ODM Source Film Number:  
 396232 ; names parents and gives birth date too.

Thomas Boniface CLAISSE and Jane FIELD had the following children:

- Jane Mary Ann CLAISSE (1823- ). *Jane was born on 23 January 1823 in Bethnal Green. She was  
 baptised on 2 March 1823 in St Matthew. She appeared in the census on 6 June 1841 in Tower  
 Hamlets.*<sup>9</sup>

- Thomas Boniface CLAISSE (1825-1880). *Thomas was born on 14 January 1825 in Bethnal Green. He was baptised on 20 February 1825 in St Matthew. He was a Silk weaver. He married Ann HARMANN on 20 September 1846 in East Ham Parish ch. He married Susan WESTWOOD on 25 February 1856 in St Paul's, Bunhill Row, Finsbury. He died in 1880 in Bethnal Green.*
- 7 Mary Ann Hester CLAISSE (1827-1895)  
James Lefever CLAISSE (1829-1883). *James was born on 5 May 1829 in Bethnal Green. He was baptised on 31 May 1829 in St Matthew. He married Mary HIGENS on 23 October 1853 in St Mary's Haggerston. He married Anne Eliza REID on 23 July 1871 in St Mary's Haggerston. He died in 1883 in Shoreditch, London.*
- Eliza CLAISSE (1833- ). *Eliza was born on 12 May 1833 in Bethnal Green. She married John CLAY in 1856 in Shoreditch.*
- Emma CLAISSE (1834- ). *Emma was born on 28 August 1834 in Bethnal Green. She was baptised on 26 April 1837 in St Matthew. She was a Dairy farmer. She married John BUSBY on 26 March 1855 in St Mary's Haggerston.*

---

## Fifth Generation

---

16. **Anthony STRIPLING** was born in 1753 (approx.) in Stowmarket, Suffolk? He married Elizabeth BUTLER in 1795 in St George in the East, Stepney. He died in 1838.

Info from Tina Biggs. NB: surname spelt Stribbling in one record; so possible birth in Suffolk as Anthony Stribbling bap 1 Jul 1753 to Benjamin and Elizabeth (good links with names).

NB: no known connection: <http://www.nationalarchives.gov.uk/A2A/records.aspx?cat=046-decm&cid=-1&Gsm=2008-06-18#-1> WELWYN Bargain & Sale DE/Cm/38121 31st May 1667 Contents: £7. 1. Gertrude Stripling of Welwyn, widow. 2. Nathaniel Manesty of Welwyn, tanner. 1a 6r in Ayot common field, late part of farm of Thomas Wilshire. Witnesses - William Hill. Henry Goulsmith. Samuel Manesty Also <http://www.clock-works.clara.net/wcmuk/sdcm/s.htm> Stripling William 1841 census age 73 Jeweler of Bird St. Litchfield Born in the county Stripling Thomas & William Bird St. Lichfield Watch & clockmaker 1842 P.N.C.

<http://www.le.ac.uk/lahs/downloads/ClocksSmPagesfromsmvolumeXXVII-3.pdf> Thomas Stripling of Barwell, Clockmaker, ca 1730 (p.34-35); baptised 2 Apr 1707, active 1730-ca. 1760, wife d. 1755. Marra Stripling m John Dennes in St Mary's Teddington, Middlesex, on 8 Oct 1691.

Also: Grundisburgh, Suffolk: Thomas 1750-1791; and another Thomas Stripling ex Grundisburgh vis in 1851 census with family.

Birth too early?

17. **Elizabeth BUTLER**, daughter of Edward BUTLER and Sarah EATON, was born in 1770 in London? She died in 1837 in London.

Tina Biggs for surname info. Marriage not on IGI. Could be bap St Matthew Bethnal Green in 1770 to Edward and Sarah Butler? indexing project (batch) number: C04698-2

system origin: England-ODM

source film number: 855938, 855939.

Anthony STRIPLING and Elizabeth BUTLER had the following children:

- 8 Benjamin STRIPLING (1796-1856?)  
Ann STRIPLING (1798-1798). *Ann was born on 11 March 1798 in Stepney. She was baptised on 1 April 1798 in Christ Church, Spitalfields. She died on 9 September 1798 in Stepney. She married on 5 November 1832 in St Leonard's Shoreditch.*
- Elizabeth STRIPLING (1799- ). *Elizabeth was born on 24 August 1799 in Stepney. She was baptised on 30 October 1805 in St Botolph without Aldgate.*
- James STRIPLING (1801- ). *James was born on 10 July 1801 in Stepney. He was baptised on 30 October 1805 in St Botolph without Aldgate.*
- Thomas James STRIPLING (1806?-1885). *Thomas was born in April 1806 (calculated) in*

*Whitechapel.*<sup>10</sup> *He was baptised on 17 May 1816 in St Botolph without Aldgate, London. He was a Porter (1838), Coal and coke dealer (1881). He married Ann WILKINS on 30 April 1838 in St Leonard's Shoreditch. He appeared in the census on 3 April 1881 in Spitalfields, London.*<sup>10</sup> *On 3 April 1881 he was a Coal and coke dealer in Spitalfields.*<sup>10</sup> *He died on 5 July 1885.*

Sarah STRIPLING (1808- ). *Sarah was born on 1 October 1808 in Stepney. She was baptised on 17 May 1816 in St Botolph without Aldgate. She married Frederick MARSDEN on 29 September 1834 in St Leonard's Shoreditch.*

William STRIPLING (1818- ). *William was born on 20 July 1818 in Stepney. He was baptised on 19 January 1823 in Christ Church.*

18. **Richard HOPKINS** was born in 1770 (approx.). He married Mary in 1795 (approx.).

Possibly born outside London? Plenty of possible Richard Hopkins b Kent on 1851 census.

1794 Kent's directory of businesses in London / Westminster / Southwark: Hopkins Benj. Grocer, 1, Redcross street, Cripplegate Hopkins & Bakers, Lace Merchts. 2, St. Paul's Church yard Hopkins John, Esq. Alderman, 36, Paternoster row Hopkins, Jackson & Manley, Druggists, 36, Ditto Hopkins John, Hosier, 49, Paternoster row Hopkins Richard, Mercht. 65, Lower Thames street Hopkins W. Silk Throwster, 24, Leman str. Goodman's fields Hopkins W. Brazier & Ironmonger, 30, Greek street, Soho Hopkins & Jennings, Silk dyers, 8, Fleur de luce st. Spitalfi. Hopkins & Gray, Ship Insurance brokers, 13, Change alley Hopkins & Lincolne, Hard Soap makers, 60, Barbican Hopkins Henry, Ship carver, Paradise street, Rotherhith Hopkins T. & C. Merchts. 13, Great St. Helen's, Bishopsgate within Hopkins Wm. Grocer, 9, Upper East Smithfield Hopkins Joshua, Dyer, Quaker street, Spitalfields NB There is a will of Richard Hopkins of Cholsey, Berkshire dated 1749 at [http://www.willtranscriptions.co.uk/surnames/g-h-i/hopkins\\_richard\\_h15.htm](http://www.willtranscriptions.co.uk/surnames/g-h-i/hopkins_richard_h15.htm); has familiar Christian names so might be an ancestor? Had a son Richard whose will is dated 1788 and refers to extensive family; no clear matches. No match in 1841 census.

19. **Mary** was born in 1770 (approx.).

no London marriages recorded yet on IGI or in GR. Not visible in 1841 census in Bethnal Green (but Mary Hopkins b 1781 in Middlesex is in Hackney Rd, Bethnal Green??).

Richard HOPKINS and Mary had the following children:

Richard HOPKINS (1797-1800?). *Richard was born on 29 April 1797 in Bethnal Green, London. He was baptised on 4 June 1797 in St Matthew, Bethnal Green. He died in 1800 (approx.).*

Mary HOPKINS (1798-1800?). *Mary was born on 9 October 1798 in Bethnal Green. She was baptised on 26 March 1800 in St Matthew. She died in 1800 (approx.).*

Sarah HOPKINS (1800- ). *Sarah was born on 10 March 1800 in Bethnal Green. She was baptised on 25 March 1800 in St Matthew.*

- 12 Richard Thomas HOPKINS (1802-1855?)

Mary Ann HOPKINS (1806- ). *Mary was born on 5 September 1806 in Bethnal Green.*

20. **Joseph BAKER** was born in 1775 (approx.). He married Ann POTTER on 7 October 1799 in Spitalfields Christchurch, Stepney.

most likely marriage on IGI; only one in London Batch M06969-1 System Origin: England-ODM Source Film Number: 592629 But several possible baptisms. No match in 1841 census in Bethnal Green.

21. **Ann POTTER** was born in 1780 (approx.).

several possible baptisms on IGI Three children bap in St Mary Whitechapel to Joseph and Ann Baker; but NB other Joseph and Ann Bakers having children baptised in London at same time. One Ann Baker b 1781 visible in 1841 census with Oakley family in Martha St, Tower Hamlets.

Joseph BAKER and Ann POTTER had the following children:

William BAKER (1799- ). *William was born in 1799 in Stepney, London. He was baptised on 15*

*September 1799 in St Mary Whitechapel, Stepney.*

Mary Ann BAKER (1803-). *Mary was born in 1803 in Stepney. She was baptised on 11 September 1803 in St Mary Whitechapel.*

13 Mary BAKER (1809-1855?)

22. **Jacques CLAISSE**, son of Boniface CLAISSE and Marie LE BAILLY, was born on 23 August 1774 in Spitalfields. He was baptised on 11 September 1774 in La Patente French Huguenot, Spitalfields. He was a Silk manufacturer. He was Protestant (French Huguenot). He married Marie Anne COCKSHUTT on 5 April 1801 in St Botolph's Bishopgate. He died in September 1804 in Bethnal Green. He was buried on 18 September 1804 in St Matthew's Bethnal Green.

Recorded at marriage as James Claisse m Mary Ann Cockshut C049141 1689 - 1774 0466704 IT 3-7 Bap RG4-4637

Either his death date or his daughter's birth dates are wrong.

23. **Marie Anne COCKSHUTT** was born in 1780 in London. She died in 1880.

Marianne Cockshett on Jacques Louis' christening record. "Recorded in a number of spelling forms including: Cockshot, Cockshott, Cockshoot, and Cockshutt, this is an English surname. It is locational and originates from any of several places such as Cockshoot Farm in the county of Worcestershire, Cockshot in Kent, or Cockshut in Lancashire. The derivation for the place name, and hence the later surname, is the Olde English pre 7th Century word 'coccscyte,' which translates literally as 'a place where nets were stretched to catch woodcock', a common bird at the time. As such the surname was originally given either to a person who lived near or operated such a trap, or alternatively someone who had left the village, and moved elsewhere, the easiest way to identify a stranger being to call him or sometimes her, by the name of the place from whence they came. In this case early examples of the surname recording include those of: John Cokschote, in the court rolls of the borough of Colchester, Essex, in 1312, and Alice atte Cocshete, in the Subsidy Rolls of Sussex in the year 1327. Other examples are those of Cocke Shoute, in the Catalogue of Ancient Deeds for Berkshire in 1562, whilst a century later in 1662, Edmund Cockshott was recorded in the roll of the Guilds of Preston, in Lancashire'. The first recorded spelling of the family name is shown to be that of Syman de Cokshute. This was dated 1296, in the Subsidy Rolls of Sussex, during the reign of King Edward 1st of England, 1272 - 1307." <http://www.familytree.ru/en/dbf/dbfamily.php?pos=25442>

[no title] MS 11936/423/730117 16 March 1802

Contents: Insured: Mary Claisse and Amelia Hanchecorne, Red Lion Street, Clerkenwell.

Jacques CLAISSE and Marie Anne COCKSHUTT had the following children:

14 Thomas Boniface CLAISSE (1802-1854)

Jacques Louis CLAISSE (1803-1872). *Jacques was born on 9 August 1803 in Old Ford, London. He was baptised on 4 September 1803 in French Huguenot Ch, Threadneedle St. He married Susannah Mary Anne WOOLCOT on 1 November 1842 in Reg Office, St Martin in the Fields. He died on 4 June 1872 in Lower Marsh (Lambeth), London.*

Mary Ann CLAISSE (1811-1878). *Mary was born in 1811 in London. She married James Frederick WULFF in 1836 (approx.). She died in 1878 in Wandsworth, London.*

24. **Thomas FIELD**, son of Thomas FIELD and Jane LEMAN, was born on 11 January 1773 in Bethnal Green. He was baptised on 24 January 1773 in St Matthew. He married Mary BARBATO on 24 May 1790 in St Matthew. He died on 28 December 1834 in England.

Named as (one of the) Jane's parents on her bap record. Alternate bap?? in 1768: C04698-2 System Origin: England-ODM Source Film Number: 855939 NB No Thomas Field b ca. 1773 in Bethnal Green visible in 1841 or 1851 census. NB Another Thomas Field m Mary Evans BUT their daughter Susan was b 1811 in Chertsey, Surrey; unlikely.

25. **Mary BARBATO**, daughter of John BARBETO and Mary, was born on 21 September 1768 in Bethnal Green. She was baptised on 14 October 1768 in St Matthew. She died in September 1836 in Bethnal Green. She was buried on 25 September 1836 in St Matthew.



possible bap shown C04698-2 System Origin: England-ODM Source Film Number: 855939 Two other Barbato marriages in 1780-1790, Bethnal Green Death in 1836 aged 68. B01903-2 System Origin: England-EASy Source Film Number: 849415.

Thomas FIELD and Mary BARBATO had the following children:

- Thomas FIELD (1791-1792?). *Thomas was born on 6 March 1791 in Bethnal Green. He was baptised on 27 March 1791 in St Matthew. He died in 1792 (approx.) in Bethnal Green.*
- Mary FIELD (1793-). *Mary was born on 6 May 1793 in Bethnal Green. She was baptised on 14 July 1793 in St Matthew.*
- Ann FIELD (1796-1865?). *Ann was born on 21 March 1796 in Bethnal Green. She was baptised on 17 April 1796 in St Matthew. She married William TILLIER in 1813 in St Dunstan, Stepney. She married Joseph Simons ORANGE on 29 October 1827 in St Matthew. She died in 1865 (approx.).*
- Jane FIELD (1798-1799?). *Jane was born on 25 March 1798 in Bethnal Green. She was baptised on 1 April 1798 in St Matthew. She died in 1799 (approx.) in Bethnal Green.*
- 15 Jane FIELD (1800-1861)
- Thomas FIELD (1802-1890). *Thomas was born on 6 November 1802 in Bethnal Green. He was baptised on 26 November 1802 in St Matthew. He was a Weaver (1842), Silk manufacturer's clerk (1851), Warehouseman for silk manufacture (1861). He married Elizabeth DIBBLE on 10 June 1821 in Christchurch Greyfriars, Newgate. He died in 1890 in Hackney.*
- William FIELD (1805-). *William was born on 8 April 1805 in Bethnal Green. He was baptised on 28 April 1805 in St Matthew. He married Mary Ann OLIVER in 1829 (approx.) in Bethnal Green.*

---

## Sixth Generation

---

26. **Edward BUTLER**, son of George BUTLER and Frances WANDASHER, was born in 1744 in Stepney, London. He was baptised on 30 December 1744 in St Dunstan, Stepney. He married Sarah EATON on 29 March 1766 in St Leonard's, Shoreditch, London.
27. **Sarah EATON** was born in 1745 (approx.).

Several possible baptisms in London.

indexing project (batch) number: M04081-1

system origin: England-ODM

source film number: 396249, 396250, 396251,

NB can't be sure these are parents of the Elizabeth who m Anthony Stripling; but circumstantial evidence is very good.

Possible birth record used here; mother's name same as his daughter.indexing project (batch) number: C05577-4

system origin: England-ODM

source film number: 595419, 595420.

Edward BUTLER and Sarah EATON had the following children:

- 17 Mary BUTLER (1767-). *Mary was born in 1767 in Bethnal Green, London.*
- Elizabeth BUTLER (1770-1837)
- Frances BUTLER (1772-). *Frances was born on 22 April 1772 in Shoreditch, London.*

28. **Boniface CLAISSE**, son of Pierre Joseph CLAISSE and Anne Jeanne LACOURTE, was born on 29 January 1746 in Bethencourt, France. He married Marie LE BAILLY on 10 August 1771 in St Matthew's Bethnal Green. He died in May 1801 in Bethnal Green. He was buried on 10 May 1801 in St Matthew's Bethnal Green.

Travelled to London ca 1770? Transcribed as Boniface Clesse in IGI records. Elected 1786, elder of the church of St Jean, Spitalfields. Lived in 139 Brick Lane; 4 Elder St, Norton Folgate; details from Davoine site.

29. **Marie LE BAILLY** was born in 1750 (approx.) in London. She was baptised on 12 January 1753 in L'eglise de Londres, Threadneedle St, London. She married on 24 March 1778 in St Matthew, Bethnal Green. She died in Hackney.

Transcribed as Mary Lebailly in IGI marriage records Possibly Marie le Bailly, b 27 May 1756, bap 7 Jun 1756, Eglise de l'Artillerie, Spitalfields; daughter of Louis le Bailly and Marguerite; or Marie Anne le Bailly b 11 Dec 1757, bap 25 Dec 1757, La Patente, Spitalfields, d of Daniel le Bailly and Catherine Anne. Daniel m Catherine Anne on 28 Sep 1755 at St Matthew's Bethnal Green. Or even Marie Anne le Bailly b 29 Jan 1736, bap 22 Feb 1736, La Patente Ch; parents Pierre Le Bailly and Anne Bernard; and there was a Pierre le Bailly bap 29 Sep 1689 in Threadneedle St who d about 1738; his parents were Jean le Bailly and Elizabeth de la Mare le Bailly.

record No. 5463 dated 10th August 1771 at St Matthews Church, Bethnal Green. The person officiating was a Theodore Smith. Witnesses were Jacques Lefevre and Mary Samson Boniface Clesse (sic) m Mary Le Bailly.

Boniface CLAISSE and Marie LE BAILLY had the following children:

Marie Anne CLAISSE (1773-1846). *Marie was born on 17 March 1773 in London. She was baptised on 12 April 1773 in At home; minister from la Patente. She was a French teacher; silk weaver. She married Isaac JONES on 6 March 1813 in St Dunstan. She died on 21 December 1846 in French Protestant Hospital, London. She was buried on 26 December 1846 in St Luke, Middlesex.*

- 22 Jacques CLAISSE (1774-1804)

Joseph CLAISSE (1776- ). *Joseph was born on 22 December 1776 in London.*

Esther CLAISSE (1778- ). *Esther was born on 7 March 1778 in London.*

30. **Thomas FIELD**, son of Thomas FIELD and Anne HARDELY, was born on 9 November 1743 in Spitalfields, London. He was baptised on 28 November 1743 in St Jean French Huguenot, Spitalfields, London. He was a Weaver. He married Jane LEMAN on 17 February 1765 in St Botolph Aldgate, London. He died on 2 August 1818 in London. He was buried on 9 August 1818.

Rosemary Burkitt, GR RG4\_4635

You know I have quite a lot about the family, but this is the first solid connection with interested parties as far back as Thomas 1743 and Jane Leman. I know that his father's name was Thomas but I can't birth info. I think that he came from the Golden Valley around Chaulk France but I just can't make it to there. The fellow in England keeps telling me we're Irish, and I told him not to waste my money as the family story is we are from Normandy, and we are French. But someone told me as a child my Uncle John was Jewish, and as a child I just thought How can that be? But it may be we were Jewish Christians from France. Do you happen to know anything about this?

Bett (EGORRIE53) on Ancestry.co.uk wrote:

Did you know that John Field (Thomas 1743, David 1784 ancestors) was one of the first employees of Royal-Livers Insurance and that his son William Field was one of the management committee and is featured in there 150 year commemorate book?

I have also been in contact with James (his brother's) family in Australia. Can you share any insight you may have?

Betty Gorrie adds: Pages from 1800-1824 Note book belonging to David Field verify facts.

31. **Jane LEMAN**, daughter of John LEMAN and Elizabeth, was born on 5 March 1746 in Bethnal Green. She was baptised on 22 March 1747 in St Matthew. She died on 6 August 1808 in London.

Likely to be two Thomas and Jane Fields having children baptised at St Matthews Bethnal Green at the same time; children too close in age on <http://members.iinet.net.au/~apriley/rpffh/default.htm>

Possibly Lehman (David Price, GR).

Thomas FIELD and Jane LEMAN had the following children:

Thomas FIELD (1768-1770?). *Thomas was born in 1768 in Bethnal Green. He died in 1770 (approx.) in Bethnal Green.*

William FIELD (1770- ). *William was born in 1770 in London.*

Jane FIELD (1771- ). *Jane was born in 1771 in Bethnal Green. She was baptised on 1 January 1772 in St Matthew.*

- 24 Thomas FIELD (1773-1834)  
Ann FIELD (1777- ). *Ann was born on 15 January 1777 in Bethnal Green. She was baptised on 19 January 1777 in St Matthew.*  
James FIELD (1779- ). *James was born on 19 November 1779 in Bethnal Green. He was baptised on 8 December 1779 in St Matthew.*  
David FIELD (1784-1841). *David was born on 7 February 1784 in Bethnal Green. He was baptised on 5 March 1784 in St Matthew. He was a Weaver. He married Martha ELDRIDGE on 17 October 1815 in St Dunstan. He died on 9 May 1841 in Bethnal Green.*

32. **John BARBETO** was born in 1730 (approx.). At some point he married Mary.

Lots of possible links Jean BARBOTEAU Bap Sep 1725 at La Patente Spitalfields London (ref Huguenot Quarto). Married Marie DE LECLUSE (ref P.Cazaly). Children: 1. Susanne BARBOTEAU bap 1752 at La Patente French Huguenot, Spitalfields, London 2. Elizabeth BARBOTEAU bap 1754 at La Patente French Huguenot, Spitalfields, London 3. Jean BARBOTEAU bap 1755 at La Patente French Huguenot, Spitalfields, London 4. Guillaume BARBOTEAU bap 1760 at La Patente French Huguenot, Spitalfields, London 5. Samuel BARBOTEAU bap 1761 at La Patente French Huguenot, Spitalfields, London NB: Isaac Barbauteau and Susanne Durand had a son Isaac Barbauteau b 24 Jul 1726 and bap 31 Jul 1726 at St Jean French Huguenot, Spitalfields C049061 1687 - 1823 0466700 IT 4-5 Film 6903757 ; and Isaac Barbotaut and Anne Susanne Durant had a son Pierre Barbotaut bap 6 Nov 1731 at St Jean French Huguenot, Spitalfields; C049061 1687 - 1823 0466700 IT 4-5 Film 6903757 And Isaac Barboteaux son of Isaac Barboteaux married on 17 Jun 1722 in Spitalfields. NB: 1761 Birth, Baptism Samuel BARBATO son of Jean Barboto and Marie De Lecluse Born 6 Feb 1761 Bap 13 Feb 1761 La Patente French Huguenot Spitalfields, London C049141; <http://www.shade.id.au/Levesque/LevesqueIGI.htm> NB: Jean Barbette b 30 Dec 1744 in Ardennes; another b 1733, Ardennes; another 1730, Ardennes! Which is ca 100 km from Bethencourt... <http://gw1.geneanet.org/geneahuy?lang=en;m=N;o=i;v=BARBETTE;t=A> has several Jean Barbette, none moved to England; and rules out those identified above I think?

33. **Mary** was born in 1735 (approx.).

Could be earliest mitochondrial ancestor?? More possible daughters: Susanna Barbeto b ca 1760 m Charles Tripcony at St Matthew's Bethnal Green on 22 Apr 1781; and Ann Barbeto m Joseph Long on 7 Apr 1780 at St Matthew's Bethnal Green.

John BARBETO and Mary had the following children:

- Ann BARBETO (1758?- ). *Ann was born in 1758 (approx.). She married Joseph LONG on 7 April 1780 in St Matthew.*  
Susanna BARBETO (1760?- ). *Susanna was born in 1760 (approx.). She married Charles TRIPCONY on 22 April 1781 in St Matthew.*  
John BARBETO (1765?- ). *John was born in 1765 (approx.). He married Sarah ROSE on 30 March 1784 in St Dunstan's Stepney.*  
25 Mary BARBATO (1768-1836)  
Elizabeth BARBITEAW (1771- ). *Elizabeth was born in 1771 in Bethnal Green. She was baptised on 3 March 1771 in St Matthew. She married Thomas MANNAKEE on 25 October 1789 in St Dunstan's Stepney.*

---

## Seventh Generation

---

34. **George BUTLER**, son of William BUTLER and Frances, was born in 1718 in Stepney, London. He was baptised on 29 September 1718 in St Dunstan, Stepney. He married Frances WANDASHER on 11 November 1741 in Westminster, London.

Possible baptism in right place at right time; but there are other possibles.

35. **Frances WANDASHER** was born in 1720 (approx.).

indexing project (batch) number: I03117-7

system origin: England-EASy

source film number:

But no record of her birth; and possible suggestion this was actually a non-conformist marriage in Fleet prison??

NB: some German records have Wandascher or Wandscher; no Wandasher.

George BUTLER and Frances WANDASHER had the following children:

- William BUTLER (1742- ). *William was born in 1742 in Stepney.*
- 26 Edward BUTLER (1744- )
- Bartholomew BUTLER (1747- ). *Bartholomew was born in 1747 in Stepney.*

36. **Pierre Joseph CLAISSE**, son of Jean Baptiste CLAISSE and Marie Augustine Henriette SAPIN, was born in 1700 in Bethencourt, France. He married Anne Jeanne LACOURTE on 30 October 1738 in Bethencourt. He died on 25 September 1794 in Bethencourt.

37. **Anne Jeanne LACOURTE** was born in 1716. She died on 27 January 1776 in Bethencourt.

or de Lacourte.

Pierre Joseph CLAISSE and Anne Jeanne LACOURTE had the following children:

- Antoine Joseph CLAISSE (1741-1805). *Antoine was born on 16 August 1741 in Bethencourt. He married Marie Joseph MOITY on 15 July 1766 in Bethencourt. He died on 24 April 1805 in Bethencourt.*
- Madeleine Joseph CLAISSE (1743-1818). *Madeleine was born on 21 May 1743 in Bethencourt. She died on 25 July 1818 in Bethencourt.*
- Alexandrine Joseph CLAISSE (1745- ). *Alexandrine was born on 5 March 1745 in Bethencourt.*
- 28 Boniface CLAISSE (1746-1801)
- Marie Anne Joseph CLAISSE (1748-1792). *Marie was born on 10 December 1748 in Bethencourt. She married Francois Joseph GABET on 13 January 1778 in Bethencourt. She died on 18 September 1792 in Bethencourt.*
- Maximilien CLAISSE (1753- ). *Maximilien was born on 29 May 1753 in Bethencourt. He married Marie Anne BLANCHARD on 8 April 1777 in Quievy, France.*
- Hubert Joseph CLAISSE (1756-1759). *Hubert was born on 2 November 1756 in Bethencourt. He died on 6 May 1759 in Bethencourt.*

38. **Thomas FIELD** was born in 1696. He married Anne HARDELY on 31 October 1731 in Christ Church, Stepney, London.

Rosemary Burkitt, GR Lots of Thomas Field bap in London 1690-1710, at least two in Stepney; one bap 1705 in St Botolph without Aldgate, son of Oldham Feild and Mary.

Field Genealogy by Pierce Notes for SIR HUBERTUS DE LA FELD:

<http://familytreemaker.genealogy.com/users/c/a/m/Thomas-R-Cambron/GENE11-0001.html>

The ancestor of the Field family, the first of whom there is any record, was Hubertus De la Feld who went to England with William, the Conqueror, in the year 1066 from near Colmar in Alsace on the German border of France. He was of the family of the Counts De la Feld, who trace back to the darkest period of the middle ages, about the sixth century. In Alsace, the De la Felds entertained in the eleventh century Pope Leo IX and his Court on the way to consecrate the Cathedral of Strasburg.

Hubertus De la Feld received of William, the Conqueror, large grants of land for military service. In the fourteenth century in consequence of wars between England and France, the English De la Felds dropped their French prefix De la and ever after wrote their name Feld, Felde and, finally Field. Sir Hubertus, the first in England, settled in Lancaster, near the city of Chester, and from him descended the Field family. It is a singular fact that the city of Chester Coat of Arms has three garbs of wheat like that of the Field family. Sir Hubertus De la Feld resided near that city and it may be that part of the Chester arms was copied from those he bore.

The Field Family & The French-Henry Families by Charles Kellogg Field, III.

Burke states in one edition of his "Landed Gentry", under the head of De la Field, that his family was originally in Alsace, near the Vosges Mountains, where it was seated at the Chateau de la Feld, near Colmar, from the darkest period of the middle ages; that the Counts de la Feld were the once powerful proprietors of the demesnes and castles near Colmar, of which the latter still bears their name. These Lords had large possessions in Alsace and Lorraine, and are frequently mentioned in the wars of these countries. The Croix d'Or of La Feld, their ancient badge is still the coat armor of the De La Field. Hubertus de la Feld was the first of his race that emigrated to England. He went over with the crowd of foreigners who attended the Conqueror hither, his name appearing enrolled as the owner of lands in the County of Lancaster in 1069, the 3rd of William I.

BUT note: Hubertus is not listed in "My Ancestors Came with the Conqueror" by Anthony J. Camp; FHL book 942 D4ca nor is he listed in "The Roll of Battle Abbey" by John Burke 1848 or "The Battle Abbey Roll" by the Duchess of Cleveland 1889.

Gorrie info.

39. **Anne HARDELY**, daughter of Henry HARDELY and Martha LENVEUX, was born in 1700. She was baptised on 23 February 1700 in Threadneedle St French Huguenot, London.

Rosemary Burkitt, GR Bap on IGI to Hanry and Marthe Hardeley (1700 or 1701?); RG4\_4645 non-conformist (French Huguenot). Hardley at marriage, M06969-1 System Origin: England-ODM Source Film Number: 592629. Several Ancestry links here, need to pursue.

Thomas FIELD and Anne HARDELY had the following children:

Jane FIELD (1730- ). *Jane was born on 8 August 1730 in Whitechapel, London. She was baptised on 17 November 1730 in St Mary, Whitechapel, London.*

William FIELD (1732- ). *William was born on 16 August 1732 in Spitalfields, London. He was baptised on 3 September 1732 in French church of St Jean, Spitalfields, London.*

David FIELD (1734- ). *David was born on 24 August 1734 in Spitalfields. He was baptised on 15 September 1734 in St Jean French Huguenot, Spitalfields, London.*

Thomas FIELD (1738-1740?). *Thomas was born on 26 May 1738 in Bethnal Green. He was baptised on 11 June 1738 in St Jean French Huguenot. He died in 1740 (approx.) in Bethnal Green.*

- 30 Thomas FIELD (1743-1818)

40. **John LEMAN**, son of John LEMON and Sarah, was born in 1718 (approx.). He was a silk dyer. At some point he married Elizabeth.

Gorrie info. Betty thinks they had two earlier children, Margaret and Elizabeth, surname spelt Lemon or Lehman, bap. in St Dunstan's. No record of bap on IGI (but there are John Man records around that time).

NB: Jacques Leman bap in Threadneedle St in 1719

And possible marriage:

groom's name: Jon ...Man

bride's name: Elizth Michell

marriage date: 29 Sep 1743

marriage place: London, Middlesex, England

indexing project (batch) number: I01009-8

system origin: England-EASy

source film number: 813835.

41. **Elizabeth** was born in 1720 (approx.). She and John LEMAN had the following children:

- 31 Jane LEMAN (1746-1808)

John LEMAN (1749-1752?). *John was born in 1749. He was baptised on 25 December 1749 in St Matthew, Bethnal Green. He died in 1752 (approx.).*

James LEMAN (1752- ). *James was born in 1752 in Bethnal Green, London. He was baptised on 23 August 1752 in St Matthew.*

John LEMAN (1754- ). *John was born in 1754 in Bethnal Green. He was baptised on 3 February*

*1754 in St Matthew.*  
 Ann LEMAN (1758-). *Ann was born in 1758 in Bethnal Green. She was baptised on 31 December 1758 in St Matthew.*

---

## Eighth Generation

---

42. **William BUTLER** was born in 1690 (approx.). At some point he married Frances.

Possible bap in St Dunstan's Stepney in 1690 to John and Esther; but other possible matches too.

43. **Frances** was born in 1690 (approx.). She and William BUTLER had the following children:

William BUTLER (1714-). *William was born in 1714 in Stepney, London.*

Frances BUTLER (1715-). *Frances was born in 1715 in Stepney.*

- 34 George BUTLER (1718-)

Alice BUTLER (1721-). *Alice was born in 1721 in Stepney.*

Edmund BUTLER (1725-). *Edmund was born in 1725 in Stepney.*

44. **Jean Baptiste CLAISSE**, son of Noel CLAIS and Marguerite GABET, was born in 1673 in Bethencourt, France. He died on 17 February 1747 in Bethencourt. At some point he married Marie Augustine Henriette SAPIN.

[http://pagesperso-orange.fr/geneadavoine/Export%20htm/f0495.htm#P\\_1427](http://pagesperso-orange.fr/geneadavoine/Export%20htm/f0495.htm#P_1427) has masses more info.

45. **Marie Augustine Henriette SAPIN** was born in 1674 (approx.). She and Jean Baptiste CLAISSE had the following children:

- 36 Pierre Joseph CLAISSE (1700-1794)

Joseph CLAISSE (1710-1794). *Joseph was born in 1710 in Bethencourt. He was a Mulquinier (linen weaver). He died on 11 December 1794 in Bethencourt.*

Marie Jeanne CLAISSE (1710?-). *Marie was born in 1710 (approx.).*

Marie Joseph CLAISSE (1710?-). *Marie was born in 1710 (approx.).*

Jean Francois CLAISSE (1711-1796). *Jean was born in 1711 in Bethencourt. He was a Mulquinier (linen weaver). He married Marie Angelique LAUDE on 23 January 1751 in Bethencourt. He died on 10 March 1796 in Bethencourt.*

Marie Joseph CLAISSE (1712-1778). *Marie was born in 1712 in Bethencourt. She died on 22 March 1778 in Bethencourt.*

Jeanne Margeritte CLAISSE (1717-). *Jeanne was born in 1717 in Bethencourt.*

46. **Henry HARDELY** was born in 1675 (approx.) in France? He married Martha LENVEUX on 24 November 1696 in St Dunstan, Stepney, London. He died in February 1736 in Spitalfields, London. He was buried on 19 February 1736 in Christ Church, Spitalfields, London.

Rosemary Burkitt, GR No good match for bap on IGI Death: I03823-6 System Origin: England-EASy Source Film Number: 5954.

47. **Martha LENVEUX** was born in 1675 (approx.) in France? She died in 1752 in Spitalfields. She was buried on 1 March 1752 in Christ Church.

Rosemary Burkitt, GR Marriage on IGI M 05576-2 System Origin: England-ODM Source Film Number: 578821. Marte at Eliz's birth. Hardiley at burial; I03823-7 System Origin: England-EASy Source Film Number: 595412.

Henry HARDELY and Martha LENVEUX had the following children:

Elizabeth HARDELEY (1698-). *Elizabeth was born in 1698 in London. She was baptised on 25 September 1698 in Threadneedle St French Huguenot, London.*

39 Anne HARDELY (1700- )

48. **John LEMON**, son of John LEMON and Alice, was born in 1693 (approx.). He died in 1745 (approx.). At some point he married Sarah.

49. **Sarah** was born in 1693.

Info from Betty Gorrie.

John LEMON and Sarah had the following children:

40 John LEMAN (1718?- )

---

## Ninth Generation

---

50. **Noel CLAIS** was born in 1632. He died on 28 March 1718 in Bethencourt, France. At some point he married Marguerite GABET.

59075 Béthencourt is the right village, in Nord-Pas-de-Calais

NB: Natalis Clays born in 1595 to Lambertis Clays and Fancisca Slove, in Hazebrouck; very close to Bethencourt; C05018-3

system origin: France-EASy

source film number: 1168947 Also Joanna and Jacoba Clays bap to same couple in 1593.

AND Petronilla and Maria Clays bap to Arnoldi and Guilliellmae van Dale in Hazebrouck, 1593-96; Arnoldi and Lamberti must be siblings!

Finally Jacop Clays bap daughter Joossine in 1596 in Zegggers-Cappel, Nord, France (same province).

51. **Marguerite GABET** was born in 1640 (approx.). She died in 1693. She and Noel CLAIS had the following children:

Anne Michelle CLAISSE (1661-1746). *Anne was born in 1661. She married Mathias MARLIERE on 1 May 1689 in Bethencourt. She died in 1746.*

44 Jean Baptiste CLAISSE (1673-1747)

52. **John LEMON** was born in 1665 (approx.). He died on 21 January 1732 in St Botolph without Aldgate. At some point he married Alice.

Could be next generation John who died 1732.

53. **Alice** was born in 1670 (approx.).

Info from Betty Gorrie.

John LEMON and Alice had the following children:

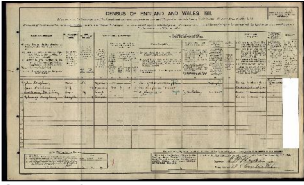
John LEMON (1691-1691). *John was born in 1691. He was baptised on 25 November 1691 in St Botolph without Aldgate. He died on 28 November 1691 in St Botolph without Aldgate.*

48 John LEMON (1693?-1745?)

---

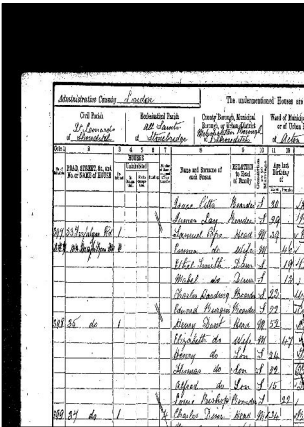
### Sources

1. "Census 1911 Bethnal Green RG14" (RG14).



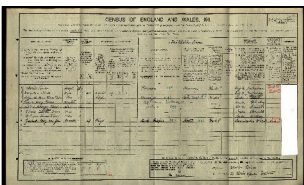
Source: Census 1911 Bethnal Green RG14, 1911 England Census for John Stripling

- "Census 1901 St Leonard's, Shoreditch, London RG13" (RG13).



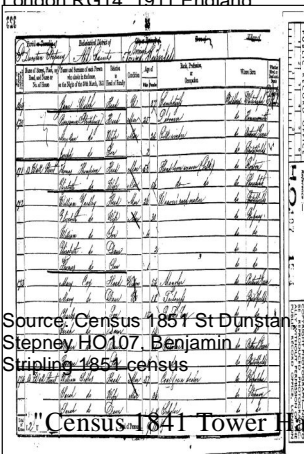
Source: Census 1901 St Leonard's, Shoreditch, London RG13, Charles Diver 1901 census

- "Census 1911 Dalston, London RG14" (RG14).



Source: Census 1911 Dalston, London RG14 1911 England

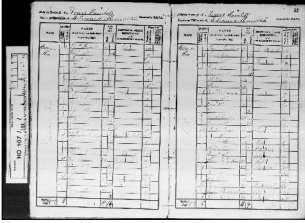
- Green RG13" (RG13).
- Stepney HO107" (HO107).



Source: Census 1851 St Dunstan, Stepney HO107, Benjamin Stripling 1851 census

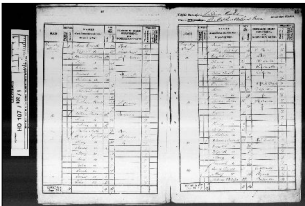
- "Census 1841 Tower Hamlets HO107" (HO107).





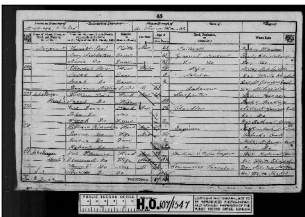
Source: Census 1841 Tower Hamlets HO107, Sophia Striplin 1841 census

7. "Census 1841 Tower Hamlets HO107" (HO107).



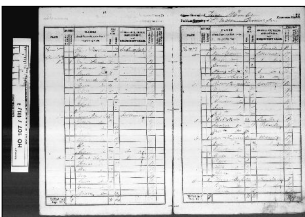
Source: Census 1841 Tower Hamlets HO107, Hopkins census 1841

8. "Census 1851 St George in the East, Tower Hamlets HO107" (HO107).



Source: Census 1851 St George in the East, Tower Hamlets HO107, Benjamin Stripling senior 1851 census

9. "Census 1841 Tower Hamlets HO107" (HO107).



Source: Census 1841 Tower Hamlets HO107, Claisse census 1841

10. "Census 1881 Spitalfields, London RG11" (RG11).